



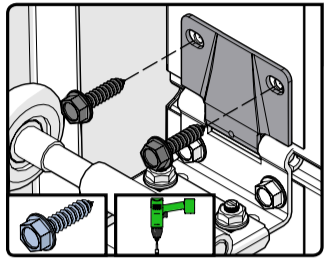
Loopdeur SC- Pass door SC - Schlupftür SC - Portillon SC



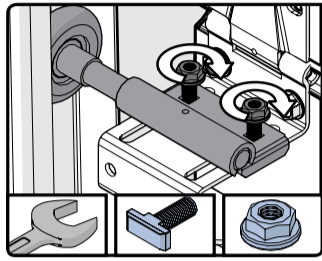
NL: Montagehandleiding Loopdeur SC
EN: Assembly manual Pass door SC

DE: Montageanleitung Schlupftür SC
FR: Manuel de montage portillon SC

9227
1018



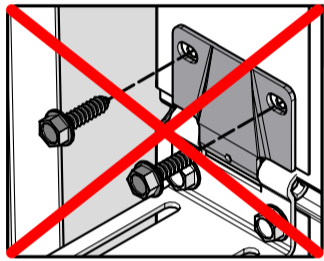
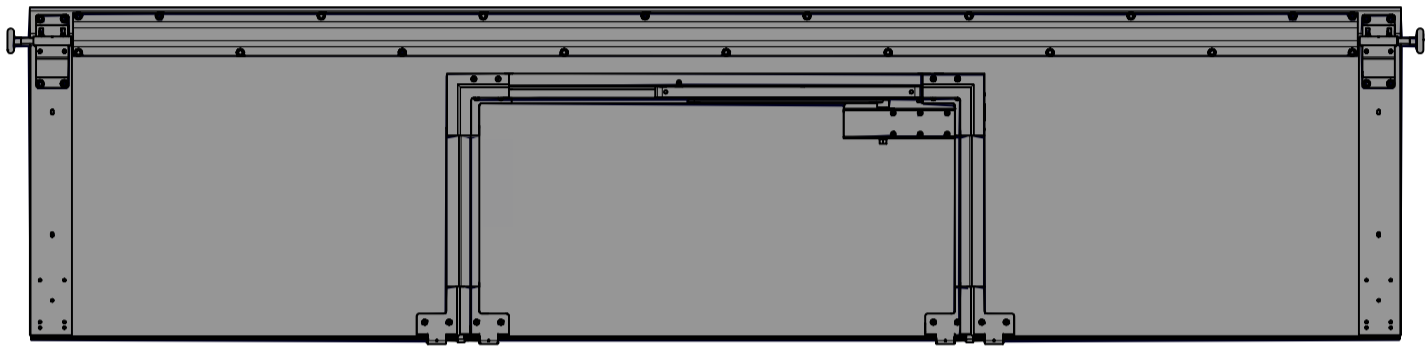
1,2,3D



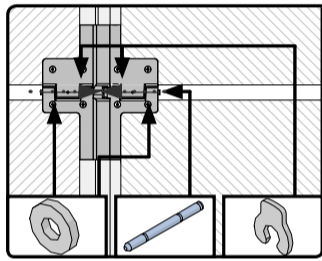
1,2,3,4E



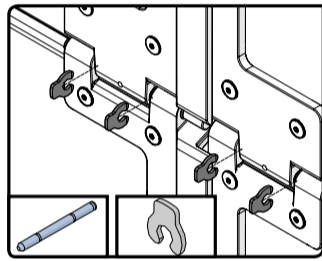
END



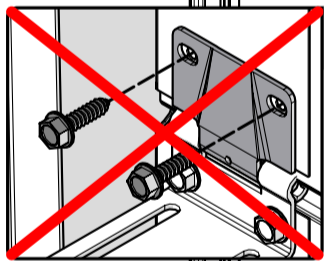
3A



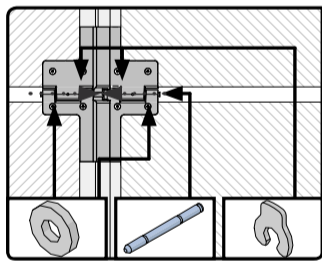
3B



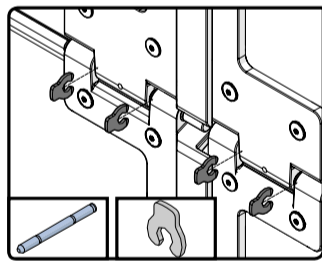
3C



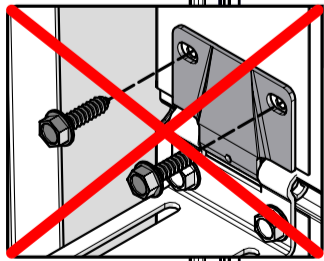
2A



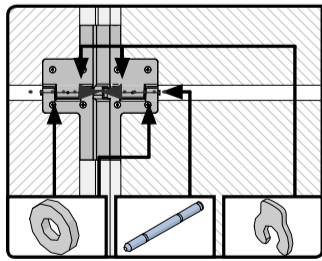
2B



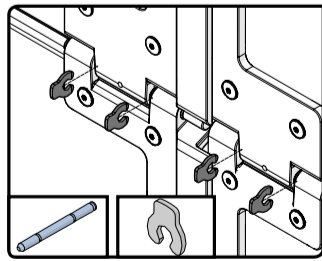
2C



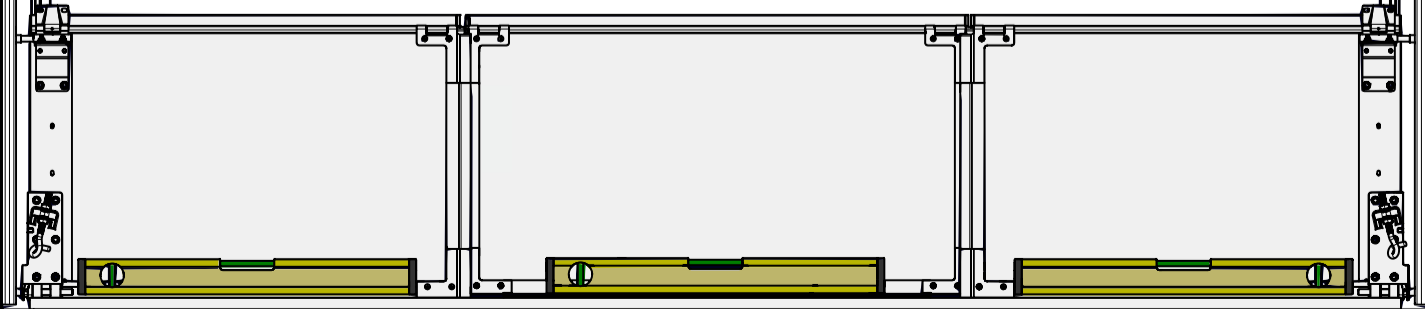
1A



1B



1C



START

